

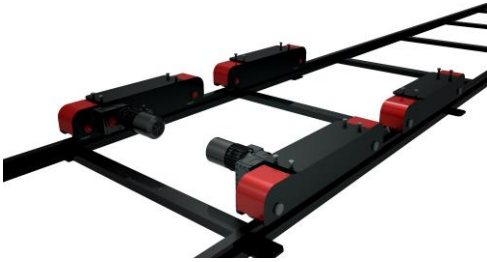
## Description

«1» SET

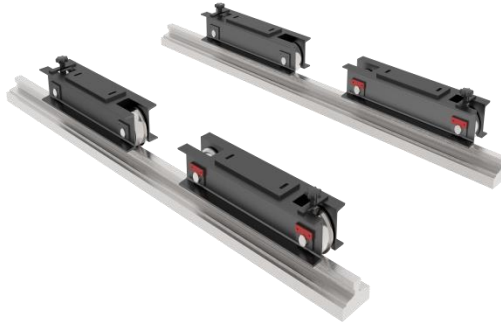
«1 pc.» Driven  
Group«1 pc.» idler  
Group

## OPTIONAL Modifications &amp; Equipments;

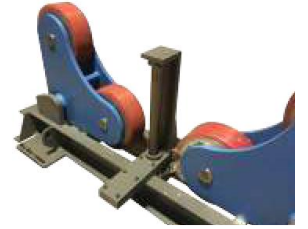
## M01: Driven+idler Buggy System



## M02: Manual Buggy System



## M03: Stoper Support

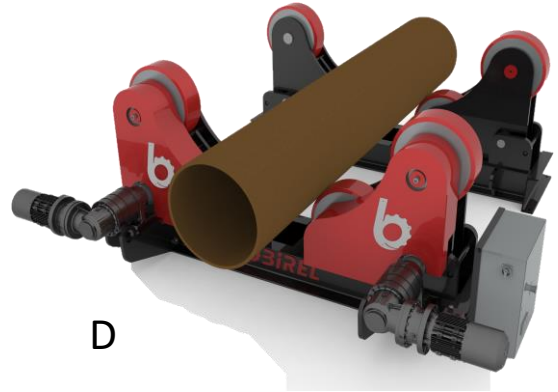
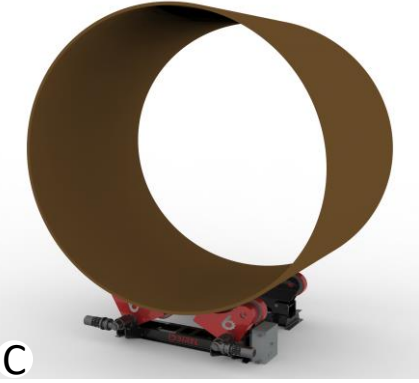


## General Features ;

- BSR model Self -Align Rotators are used to rotate for the purpose of providing economical and practical circular welding solution to cylindrical parts having variable cylindrical diameters.
- BSR model Self-Align Rotators are used for rotating to perform circular welding of cylindrical parts, Such as Tanks, Pressure vessels, Tower Tubes, Boilers, Depots, Reactors, Depots, Fuel Barrels, WindPower, Petrochemical, PipeLines, Shipbuilding sector, etc.
- The unique design of BSR model Self-Align Rotator permits the rollers to align instantly themselves to the workpiece without any manual pre-adjustment.
- Robust steel welded construction.
- The cylindrical part remains central independent of diameter and frequent adjustment of the welding head becomes unnecessary.
- Operators with BSR model Self-Align Rotators can easily rotate workpieces clockwise(CW) or counterclockwise(CCW) at accurate controlled speeds by means of precise command control
- To start the rotation of workpiece, no extra time or no labour is needed. The rotators have an important place in steel construction workshops because they reduce the use of a crane, as well as increase the speed and the efficiency of automatic or manual welding processes.

❖ All technical specifications are subject to change without prior notice.

## Application illustrations



## Technical Advantages :

- One(1)set of BSR model Self Align Rotator consists of two units,one(1) driven unit and one(1) for idler unit. According to specific applications, the number of driven and idler units can be changed.
- Birel Machinery as standard manufactures 5 • 10 • 15 • 20 • 30 • 40 • 50 • 60 • 80 • 100 • 120 ton, Additionally, Upon request over 120 ton models are manufactured as special productions.
- In Driven Units, up to 30ton capacities, Single driven roller is used in Roller Group, 30ton & above Double driven Rollers are used in Roller Group.
- Optionally, opportunity of moving over rails by means of Buggy carriers is available. Two Buggy carriers option are available The first Buggy carrier choice is Rollers moved manually over rails and the second one is using driven movement of rollers over rails .
- Optionally, Single driven roller is present, as standard, within Roller holdinggroup.Additionally, Double driven rollers choice is available optionally.

❖ All technical specifications are subject to change without prior notice.

## Technical Properties

### Standard Features

- Adjustable worktable rotation speed & digital display.
- Self-Aligned Roller Holders
- Polyurethane Rollers absorbing shocks and vibrations
- 5 mt. Command Cable
- 5 mt. Power Cable
- Brake & Fan Cooled Motor
- Standard Machine Colors:
  - Chassis RAL 7011(Grey)
  - Sheet Covers:RAL 3002(Red)
- Power supply :380V -50 Hz. (3 phase)
- One (1) Year Warranty (wearing parts out of warranty)

### Optional Control Units

Master Control



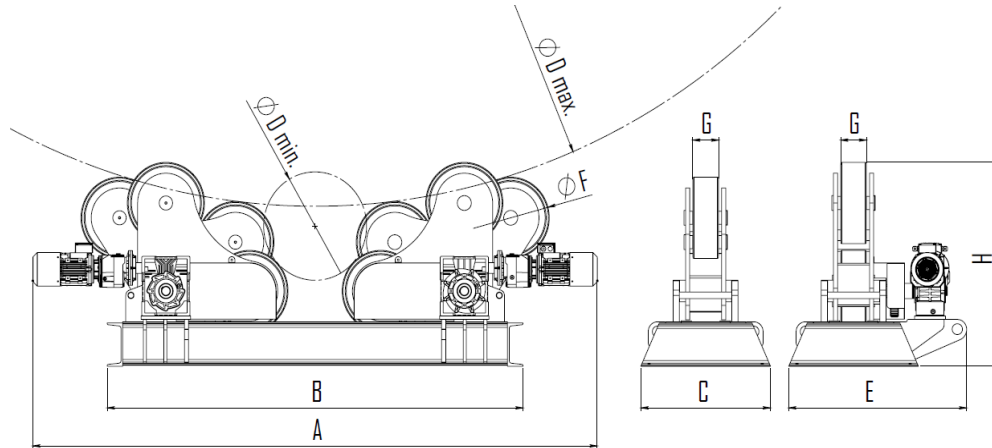
Foot Pedal



Overhead Hangable



Remote Control



### Technical Details :

Model : BSR	Unit	BSR-5	BSR-10	BSR-15	BSR-20	BSR-30	BSR-40	BSR-50	BSR-60	BSR-80	BSR-100	BSR-120
Rolling Capacity	ton	5	10	15	20	30	40	50	60	80	100	120
Max. Load (Drive Unit)	t/unit	2.5	5	7.5	10	15	20	25	30	40	50	60
Max. Load (idler unit)	t/unit	2.5	5	7.5	10	15	20	25	30	40	50	60
4 Wheel drive		option	option	option	option	standard	standard	standard	standard	standard	standard	Standard
Rotation Speed	mm/min	150-1220	150-1220	150-1300	150-1470	150-1300	150-1200	150-1230	150-1350	150-1500	150-1400	150-1500
Diameter Range (ØDmax-ØDmin)	mm	250-3000	450-3000	450-3300	450-4600	500-4600	500-4600	500-4600	550-5200	550-5500	600-5500	600-5500
Roller Diameter (ØF)	mm	240	340	340	375	415	440	440	500	550	550	550
Roller Width (G)	mm	75	100	110	125	125	130	130	150	175	220	240
Roller Material		PU	PU	PU	PU	PU	PU	PU	PU	PU	PU	PU
Length (Drive Unit) (A)	mm	1500	2580	2620	2540	2680	2790	2790	3180	3300	3300	3350
Length ( Idler Unit ) ( B )	mm	1140	1970	1970	2020	2150	2330	2330	2740	2860	2880	2880
Width ( Drive Unit ) ( E )	mm	920	720	760	1050	1050	1150	1150	1200	1250	1440	1550
Width ( Idler Unit ) ( C )	mm	350	500	520	560	580	700	700	700	700	900	900
Height ( H )	mm	517	880	880	940	1000	1040	1040	1260	1320	1330	1330
Motor Power	kW	0.37 x 1	0.25 x 2	0.25 x 2	0.55 x 2	0.55 x 2	0.55 x 2	0.55 x 2	0.75 x 2	0.75 x 2	1.1 x 2	1,5 x 2
Weight	kg	380	1100	1180	1360	1830	2540	2600	4150	5320	6200	6400

↳ Out of these standard capacities, Birel Machinery, according to customer requirements, has the manufacturing possibility at different capacities, sizes.

❖ All technical specifications are subject to change without prior notice.