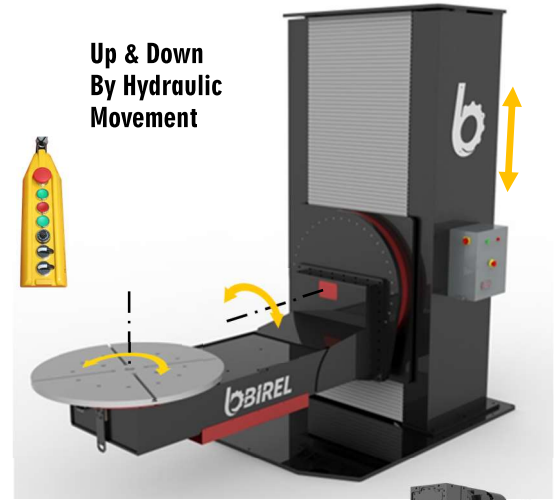


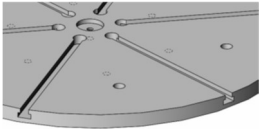


## Description

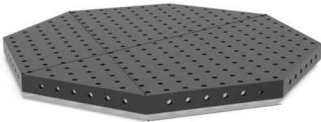


## OPTIONAL Modifications & Equipments;

**M01:** Round WorkTable T – grooved Thick Plate



**M02:** Octagonal Table



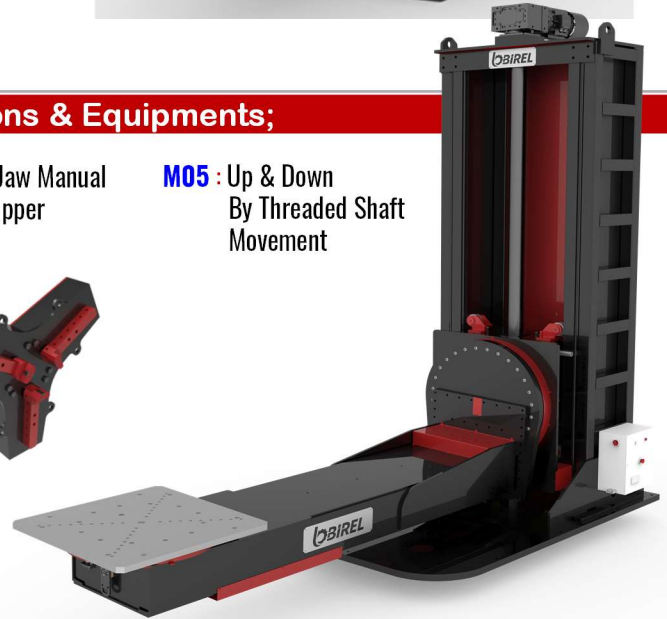
**M03:** Manual Chuck



**M04:** 3 Jaw Manual Pipe Gripper



**M05:** Up & Down By Threaded Shaft Movement



## General Features ;

- BLP-3AX model 3 axis Heavy Duty L-Shape Positioner, Regardless of any geometric shape within dimensions of the machine, In favour of being able to position and generating remarkable welding edges to all workpieces are qualified & ideal solutions. Ensures utmost capability of welding & likewise assembling at 360° degree of any required position .
- Designed in best suitable configuration to perform safe positioning of the workpieces having asymmetry & higher probability of overturn.
- Avoids of crane operations that are part handling, rotating of parts, etc. during production, Provides the opportunity of using operator's working power to use more effectively by minimizing time loss and it increases the efficiency of work.
- BLP-3AX model 3 axis Heavy Duty L-Tye positioner with robust construction & easy controlling ability, Provides the opportunity of comfortable working to operator & improves the quality of welding.
- The operators with BLP-3AX "L" type positioner, At center axis of worktable Workpiece can be precisely rotated over the command control at Clockwise(CW)or Counterclockwise(CCW) at specified speeds.

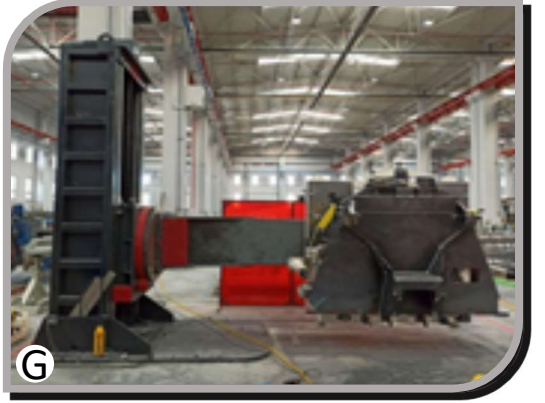
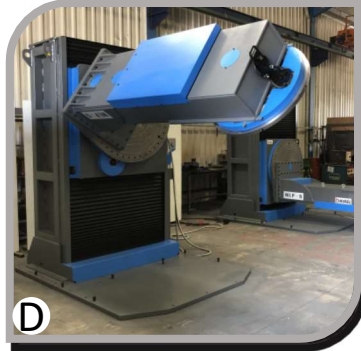
## Technical Advantages ;

- Birel Machinery as standard provides BLP-3AX models in capacities of 1,5 • 3 • 5 • 7,5 • 10 ton.
- Motor with brake and forced fan cooling.
- Welding Arc Group
- Allow quick connection of workpieces by using " T " slots on worktable(Optional)
- In special conditions, Out of these standard capacities, Birel Machinery, according to customer standards & requirements, has the opportunity of manufacturing possibility at different capacities.
- For any special request or project, Please do not hesitate to contact with us.

❖ All technical specifications are subject to change without prior notice.



Application illustrations



Standard Features

- Capability of 360 degree worktable rotation.
- Round Worktable with Slots.
- Vertical Hydraulic Lifting of workpiece is presented as standard.
- Adjustable worktable rotation speed & Dijital display.
- 5 mt. Command Cable
- 5 mt.Power Cable
- Brake & Fan Cooled Motor
- Welding Earthning Group
- Standard Machine Colors:
  - Chassis RAL 7011(Grey)
  - Sheet Covers:RAL 3002(Red )
- Power supply :380V -50 Hz. (3 phase)
- One (1) Year Warranty

Optional Control Units

Master Control



Foot Pedal



Overhead hangable



Digital Control

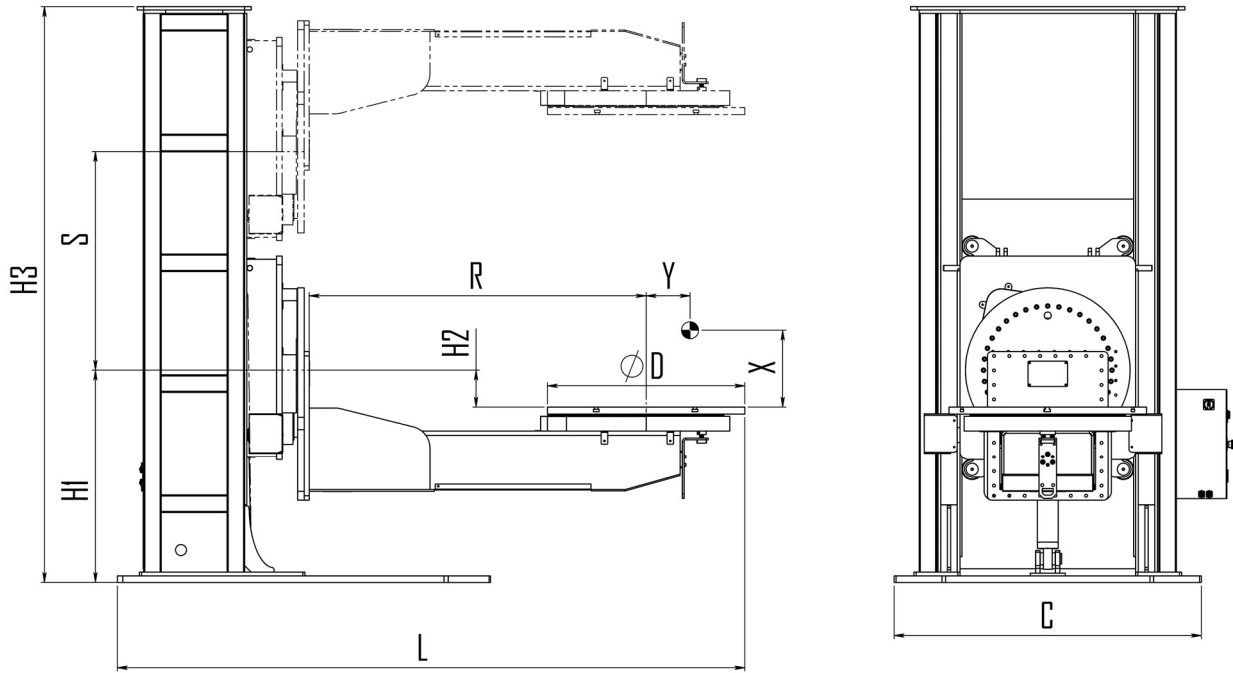


Remote Control



❖ All technical specifications are subject to change without prior notice.

### Technical Properties



#### Technical Details :

Model :BLP-3AX	Sym	Unit	BLP1,5-3AX	BLP3-3AX	BLP5-3AX	BLP7,5-3AX	BLP10-3AX
Capacity		kg	1500	3000	5000	7500	10 000
Lift Stroke	S	mm	1000	1150	1200	1200	1300
Working Radius	R	mm	1300	1600	1700	1850	2000
Offset Distance	X-Y	mm	300-150	300-150	450-150	450-150	450-150
Table Diameter	ØD	mm	850	1000	1150	1250	1350
Table Torque		Nm	2260	4550	7500	12050	15000
Table Speed		rpm	0,2-1,4	0,2-1	0,15-0,78	0,1 – 0,66	0,1 – 0,5
Tilt Torque		Nm	3340	6900	14750	19300	24700
Tilt Speed		rpm	0,80	0,55	0,55	0,45	0,45
Lifting Speed		m/min	0,70	0,70	0,65	0,65	0,50
Max.Welding Current	A	Amp	700	700	1000	1000	1000
Rotating Centre Height	H1	mm	850	1100	1100	1100	1300
Plate Rotating Centre Difference	H2	mm	100	100	230	260	280
Total Height	H3	mm	2550	3000	3250	3250	3480
Total Length	L	mm	2900	3150	3650	3780	4200
Total Width	C	mm	1380	1500	1740	1800	1920
Motor Power of Table		kW	0,55	0,75	1,5	1,5	1,5
Motor Power of Tilting		kW	0,55	0,75	1,5	1,5	1,5 x 2
Hydraulic Motor Power of Lifting		kW	1,1	2,2	2,2	3	3,

↪ Out of these std. capacities, Birel Machinery, according to customer requirements, has the manufacturing possibility at different capacities, sizes.

❖ All technical specifications are subject to change without prior notice.