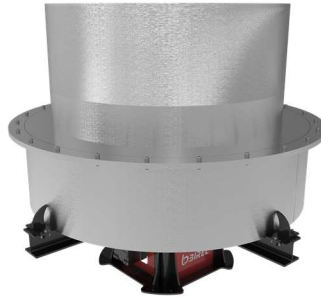
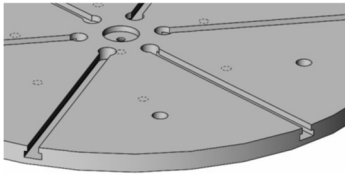
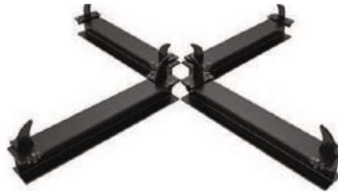


Description



OPTIONAL Modifications & Equipments;

M01: Round WorkTable T – grooved Thick Plate**M02:** Fastening Apparatus

General Features :

- BTT model Turn Table is widely used industrial, petro-chemical, chemical, energy power plant, transmission, ship building, etc.sectors
- BTT model Turn Table is designed for easily mounting of cylindrical parts for twizzling of by means of worktable provided. Optional special quick mounting-detaching equipment provides easy working advantage.
- BTT model 1 axis Turn Table Positioner, Regardless of any geometric shape within dimensions of the machine, In favour of being able to position and generating remarkable welding edges to all workpieces are qualified & ideal solutions. Ensures utmostly capability of welding & likewise assembling at 360° degree of any required position .
- Avoids of crane operations that are part handling, rotating of parts, etc. during production, Provides the opportunity of using operator's working power to use more effectively by minimizing time loss and it increases the efficiency of work..
- Operators can control workpieces over BTT TurnTable Positioner whether in Counterclockwise(CW) or Counterclockwise(CCW)by means of cable command control. They can easily rotate at adjustable speeds.
- BTT-model Turn Table Positioner WorkTable is supplied as standard with Slot grooved. Optionally, If Worktable is requested as T-Grooved Thick Plate also can be manufactured as an option.

Technical Advantages :

- Birel Machinery as standard provides BTT models in capacities of 1 • 2 • 5 • 10 • 25•50 ton.
- Motor with brake and forced fan cooling.
- Welding Arc Group
- Allow quick connection of workpieces by using “ T ” slots on worktable(Optional)
- In special conditions, Out of these standard capacities, Birel Machinery, according to customer standards & requirements, has the opportunity of manufacturing possibility at different capacities.
- For any special request or project, Please do not hesitate to contact with us.

❖ All technical specifications are subject to change without prior notice.

Application illustrations



Standard Features

- Round Worktable with Slots.
- Adjustable worktable rotation speed & Dijital display.
- Ability of 360 degree worktable rotation.
- Limit Switches to terminate movement.
- 5 m. Command Cable
- 5 m.Power Cable
- Brake & Fan Cooled Motor
- Welding Earthning Group
- Standard Machine Colors:
 - Chassis RAL 7011(Grey)
 - Sheet Covers:RAL 3002(Red)
- Power supply :380V -50 Hz. (3 phase)
- One (1) Year Warranty

Optional Control Units

Master Control



Foot Pedal



Overhead Hangable

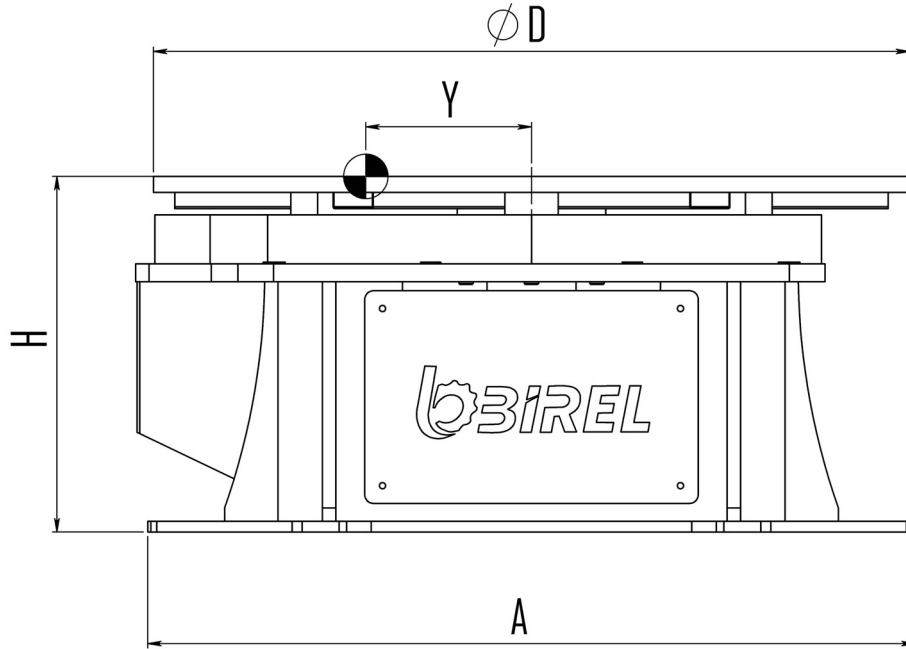
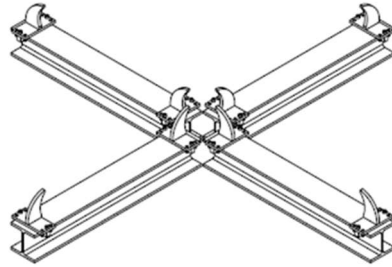
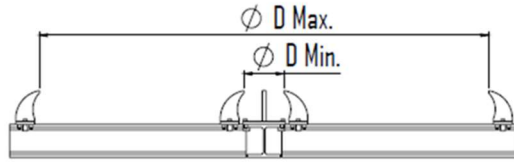


Remote Control



Technical Properties

OPTIONAL (M02)



Technical Details :

Model : BTT	Sym	Unit	BTT-1	BTT-2	BTT-5	BTT-10	BTT-25	BTT-50
Loading Capacity		kg	1000	2000	5000	10 000	25 000	50 000
Rotation Speed		rpm	0.15 – 1.4	0.06 – 0.55	0.06 – 0.55	0.05 – 0.33	0.05 – 0.20	0.05 – 0.20
Welding Current	A	Amp	700	700	1000	1000	1000	1000
Offset Distance	Y	mm	150	150	130	100	80	80
Table Plate Diameter	ØD	mm	850	900	1250	1500	1800	2000
Dia.that can be fixed onto the apparatus	ØDmin-ØDmax	mm	200-2000	200-2000	200-2200	600-4400	600-4400	600-4400
Height	H	mm	400	450	490	650	720	770
Length	A	mm	860	980	1250	1350	1550	1660
Width	A	mm	860	980	1250	1350	1550	1660
Power of WorkTable		kW	0.37	0.37	0.37	0.55	0.75	1.1
Weight		kg	360	570	840	1250	2100	3200

Out of these stand.ard capacities, Birel Machinery, according to customer requirements, has the manufacturing possibility at different capacities, sizes.

❖ All technical specifications are subject to change without prior notice.